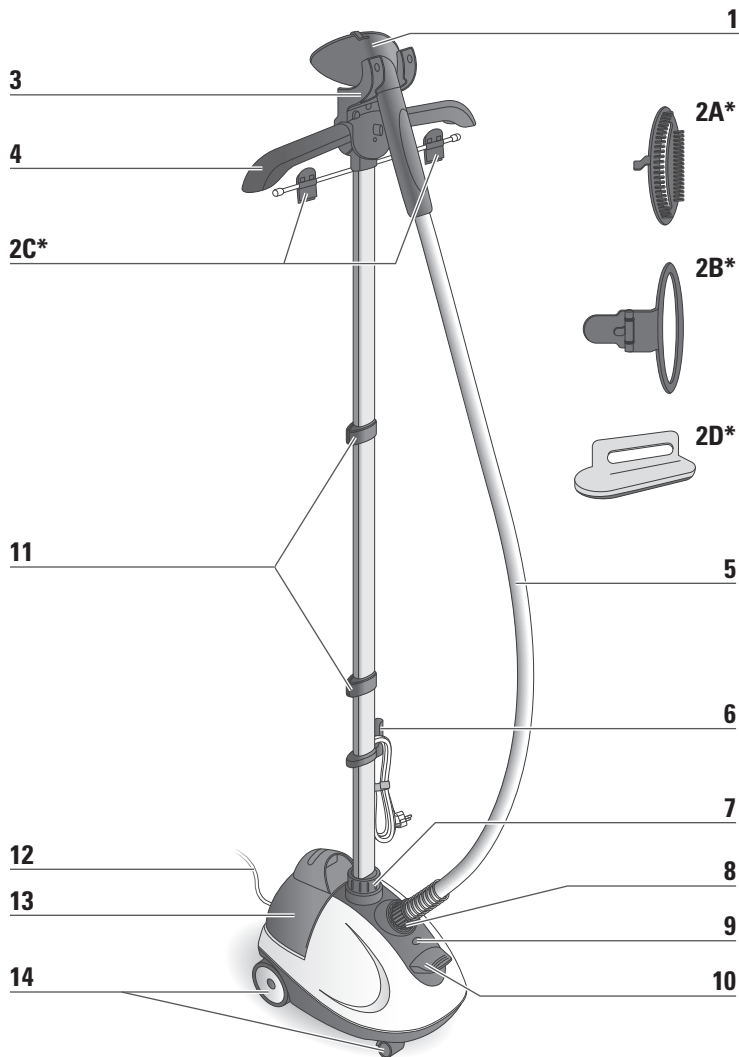




INSTANT STEAM

IT21XX

www.tefal.com



* Depending on model

PRODUCT DESCRIPTION

- | | |
|-----------------------------------|---------------------------------|
| 1. Steam Head | 7. Pole Fastener |
| 2A*. Fabric Brush | 8. Hose Connector & Lock |
| 2B*. Crease attachment | 9. On/Off Indicator |
| 2C*. Pant Clips | 10. On/Off Pedal |
| 2D*. Lint Pad | 11. Pole Locks |
| 3. Steam head craddle | 12. Power cord |
| 4. Foldable Hanger | 13. Water tank |
| 5. Woven fabric steam hose | 14. Wheels |
| 6. Power Cord Hook | |

IMPORTANT SAFETY INSTRUCTIONS

- When using your appliance, basic precautions should always be followed, including the following:
- Read all instructions before using this product.
- This product has been designed for indoor, domestic use only. Any commercial use, inappropriate use or failure to comply with the instructions, the manufacturer accepts no responsibility and the guarantee will not apply.
- Always plug your appliance:
 - into a mains circuit with voltage between 220 V and 240 V.
 - into an earthed electrical socket.

Connecting to the wrong voltage may cause irreparable damage to the appliance and will invalidate your guarantee.

If using a mains extension lead, ensure that it is correctly rated (16A) with an earth, and is fully extended.

- Completely unwind the power cord before plugging into an earthed socket.
- Use appliance for its intended use only.
- To reduce the risk of contact with hot water emitting from steam vents, check appliance before each use by holding it away from body and operating steam button.

- This appliance can be used by children aged from 8 years and above and persons with reduced physical, sensory or mental capabilities or lack of experience and knowledge if they have been given supervision or instruction concerning use of the appliance in a safe way and understand the hazards involved. Children shall not play with the appliance. Cleaning and user maintenance shall not be made by children without supervision.
- Never pull on the cord to disconnect the appliance from electrical outlet; instead, grasp plug and pull to disconnect on the plug to disconnect the appliance.
- Do not allow cord to touch hot surfaces or come into contact with rough or sharp edges. Let the appliance cool completely down before putting away. Loop cord loosely around appliance when storing.
- Always disconnect appliance from the electrical supply when filling with water or emptying when cleaning, when removing or refitting accessories and when not in use.
- Care should be taken when using the appliance due to the emission of steam.
- Do not operate appliance with a damaged cord or if appliance has been dropped or damaged. To avoid the risk of electric shock, do not disassemble or attempt to repair the appliance. Take it to the nearest approved service centre for examination and repair. Incorrect reassembly or repair could cause a risk of fire,

electrical shock or injury to persons when the appliance is used.

- Close supervision is necessary for any appliance being used by or near children.
- Never leave the appliance unattended when it is connected to the mains. Before storing the appliance, once it is unplugged, please wait until it has cooled down (around 1 hour).
- Burns could occur from touching hot metal or plastic parts, hot water or steam. Use care when you empty a steam appliance. There may be hot water in the reservoir.
- If an extension cord is absolutely necessary, a cord with a 16A ampere rating shall be used. A cord rated for less amperage can result in a risk of fire or electric shock due to overheating. Care shall be taken to arrange the cord so that it cannot be pulled or be tripped over.
- To protect against a risk of electric shock, do not immerse the appliance in water or other liquids.
- Do not direct steam at people, animals or clothes while they are being worn.
- This appliance is not intended for use by persons (including children) with reduced physical, sensory or mental capabilities, or lack of experience and knowledge, unless they have been given supervision or instruction concerning use of the appliance by a person responsible for their safety. Children should be

supervised to ensure that they do not play with the appliance.

- The use of accessory attachments other than those provided by the manufacturer is not recommended and may result in fire, electric shock or personal injury.
- The appliance must be rested on a stable surface. When placing the appliance on its base, ensure that the surface on which the base is placed is stable.
- The appliance must not be used if it has been dropped, if there are visible signs of damage or if it is leaking.
- Check the electrical power cord for sign and wear or damage prior to use. If the electrical power cord is damaged, it must be replaced at an approved service centre to avoid any danger.
- Do not use other descaling products than the one cited in the IFU.

Before first use

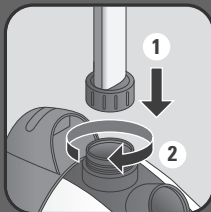
- When you first use the appliance, some smoke or a harmless odour may be produced or there may be a small discharge of particles. This will not affect the use of the appliance and will disappear quickly.

What water to use?

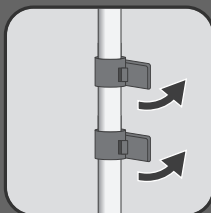
- Your appliance has been designed to use tap water.
If your water is very hard, mix 50% tap water and 50% bottled demineralised water.
Never use water containing additives (starch, perfume, aromatic substances, softeners, etc.), or condensation water (for example water from tumble dryers, water from refrigerators, water from air conditioning units, rainwater). This water contains organic waste materials or minerals that concentrate under the effect of heat and cause spitting, brown colouring or premature ageing of your appliance.

SAVE THESE INSTRUCTIONS

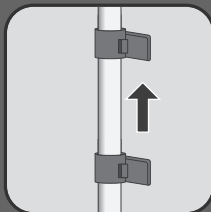
1. ASSEMBLY



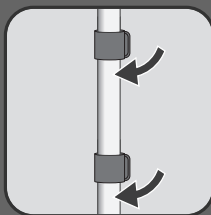
Insert the pole in the housing & then screw until lock.



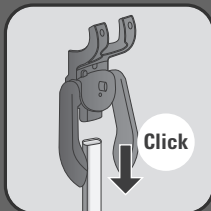
Open the two pole locks.



Extend the pole fully.



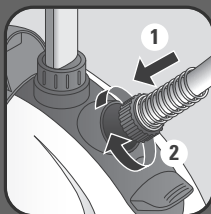
Close the two locks.



Fully insert the hanger vertically on top of the pole.



Position the steam head on its cradle.



Fully insert the hose and then turn clockwise until full locking by click sound.



Please pay attention to fully lock the hose to its base to avoid hot water spitting. Never release the hose connection during use.

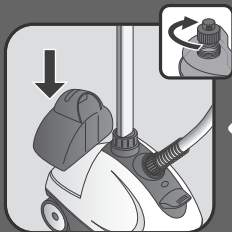
2. BEFORE USE



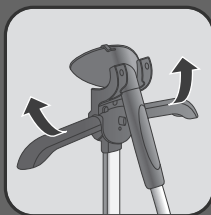
Remove the water tank.



Remove the cap then fill in the water tank.



Fully screw the water tank cap and insert tank back in appliance.



Extend both sides of hanger.

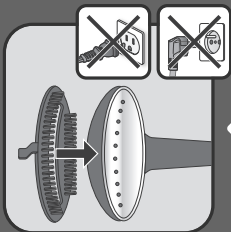


Add the clothe of your choice on the hanger.

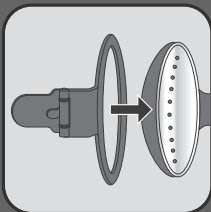
3. ACCESSORIES



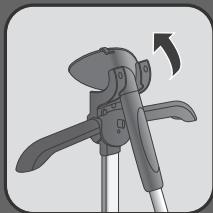
Accessories must be settled when appliance is cold and not running.



The fabric brush opens the weaves of the fabrics for better steam penetration. Attach the fabric brush to the steam head when appliance is unplugged.



The crease attachment allows you to create crease either on your pants or jackets.



Position the steam head on its cradle.

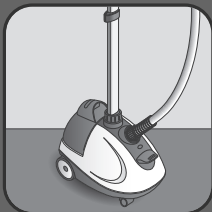


Use the lint pad to remove hair, lint and animal fur the lint pad must not be used when attached to the appliance.

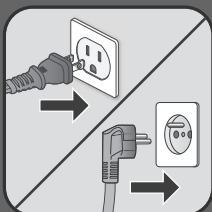


If your appliance is featured with removable pant clips, you can use them by inserting and pushing down.

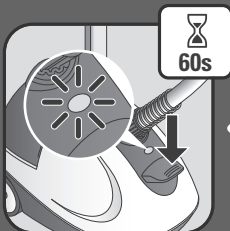
4. USE



Appliance has to remain horizontally set on ground floor.



Plug in the appliance.



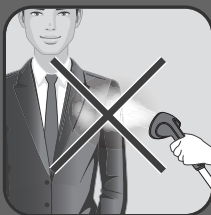
Press once the ON/OFF pedal and check that light is switching on. Wait for 60 seconds before steaming.



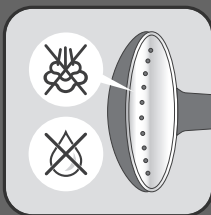
After 60 seconds approximately, steam will come out.



For optimal use, pass the steam jets on your garment from top to bottom.



Never steam directly on people.

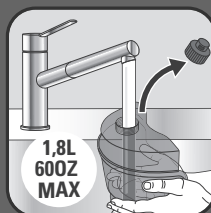


If steam is not coming out anymore, this can be due to low water level in tank.

5. DURING USE



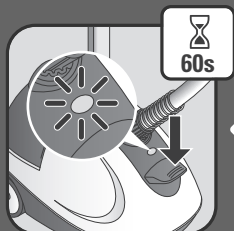
Remove the water tank.



Remove the cap then fill in the water tank.

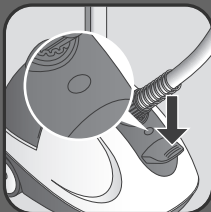


Fully screw the water tank cap and insert tank back in appliance.

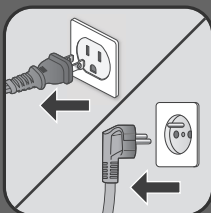


Press the ON/OFF pedal and check that light is switching on. Wait for 60 seconds before steaming.

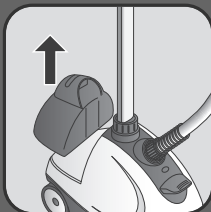
6. AFTER USE



Press the On/Off Pedal and check that light is switched Off.



Unplug the appliance.



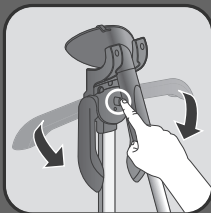
Remove the water tank.



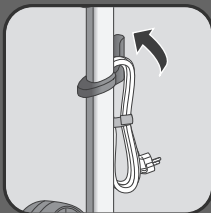
Unscrew the cap and then empty the water tank completely in a sink.



Screw back the cap and place the water tank back to its appliance.



Press on the button located on the hanger to bring down the arms.



Roll up the power cord and place it on its hook.

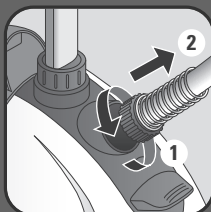


Wait for an hour for your appliance to cool before storing.

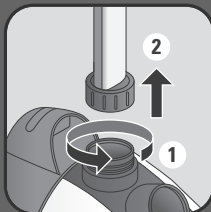
7. DESCALING PROCEDURE



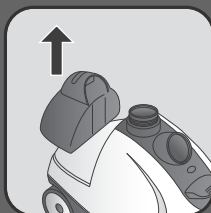
WARNING! Wait for an hour that appliance completely cools down.



Ensure that hose is cold and Unlock anti-clockwise. Disconnect the hose it from its base and remove the steam head from its cradle.



Unscrew the locker and pull out the pole.



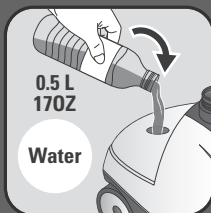
Remove the water tank.



Never fill inside the pole connection.



Fill in 0,5l of water in the appliance hose connection.



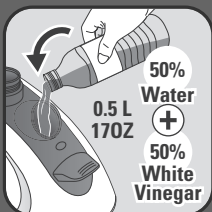
Fill in 0,5l of water in the appliance tank inlet.



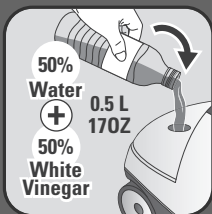
Shake Gently the appliance to remove the main particles.



Vertically tilt the appliance to empty water in a sink.



Prepare a 1L mix of 0,5L of water & 0,5l of white vinegar only. Fill in 0,5l of mix in the appliance hose connection.



Fill in 0,5L of mix in the appliance tank inlet.



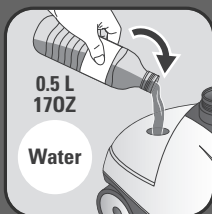
Wait for 12 hours minimum for mix efficiency.



Vertically tilt the appliance to empty mix in a sink.



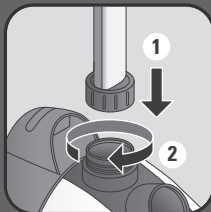
Fill in 0,5l of water in the appliance hose connection.



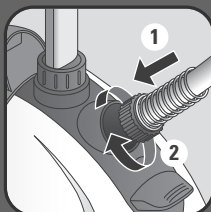
Fill in 0,5l of water in the appliance tank inlet.



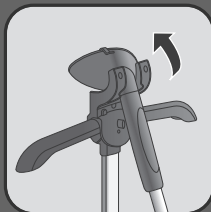
Vertically tilt the appliance to empty water in a sink.



Insert the pole in the housing & then screw until lock.



Fully insert the hose and then turn clockwise until full locking by click sound.



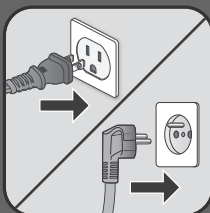
Position the steam head on its cradle.



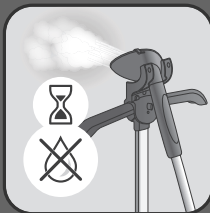
Remove the cap then fill in the water tank.



Fully screw the water tank cap and insert tank back in appliance.



Plug in the appliance.



Let the appliance run until water tank is emptied completely.

8. CLEANING



Wait an hour for complete cool down.



only use a sponge with water to clean the basis.



Only use a sponge with water to clean the steam head.



Never use liquids or detergents when cleaning your appliance.



Never wash or rinse appliance directly over a sink.



Never wash or rinse the steam head directly over a sink.

TROUBLESHOOTING

Problems	Possible causes	Solutions
There is no steam.	The appliance has not been turned on.	Check that the appliance has been plugged in correctly. Next press the On/Off pedal, the power indicator light located at the front of the appliance will come on.
	The hose has been obstructed.	Check that the hose is not bent or twisted.
	There is no water left in the water tank.	Switch off the device and fill the water tank.
The steam flow is low.	Your steamer has a build-up of scale because it has not been rinsed out regularly.	See descaling process (Cleaning paragraph).
	The hose has been obstructed.	Check that the hose is not bent or twisted.
	There is no water left in the water tank.	Switch off the appliance and fill the water tank.
	The steam is not ready yet.	The appliance will produce steam about 60 seconds after it has been switched on.
Water runs through the holes of the steam head.	There is condensation in the hose.	Never use a steamer in the horizontal position. Hold the hose vertically outstretched and wait for the condensed water to return to the steamer.
The steamer takes a long time to heat and/or ejects white particles.	Your steamer has a build-up of scale because it has not been descaled regularly.	See descaling process (Cleaning paragraph).

