

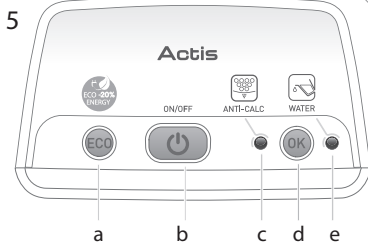
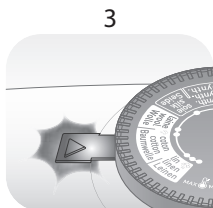
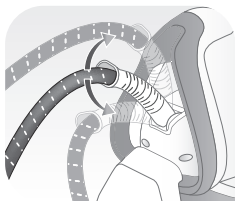
Tefal[®]

Actis

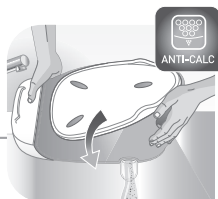
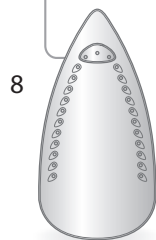
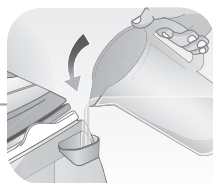
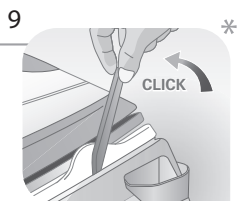
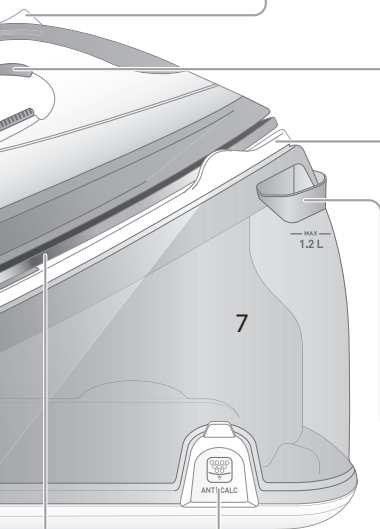
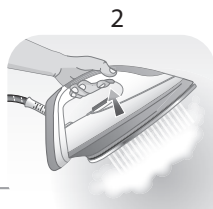
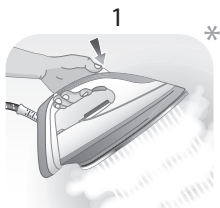
EN



www.tefal.com



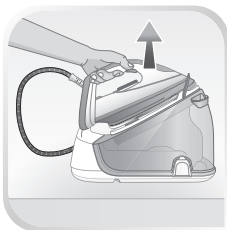
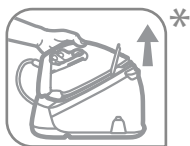
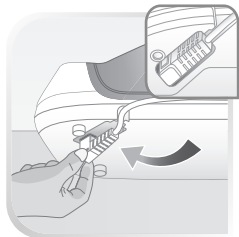
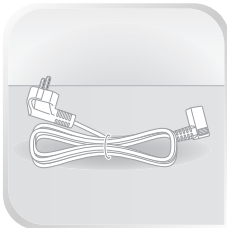
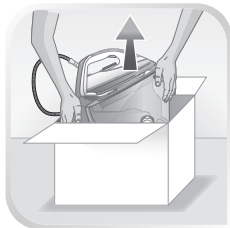
* Depending on model.



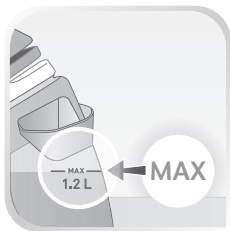
? www.tefal.com



1.

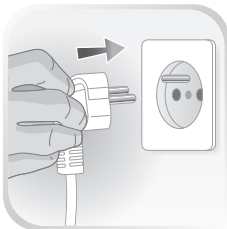
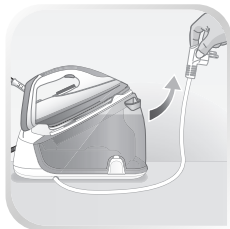
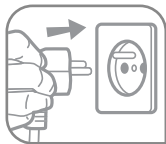


1.





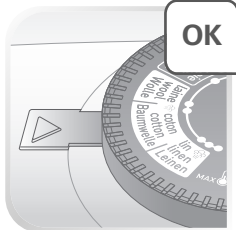
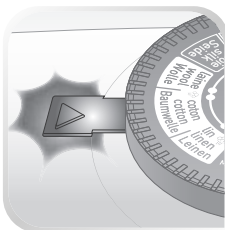
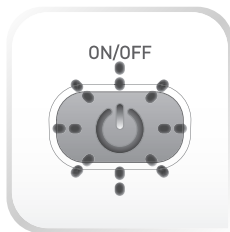
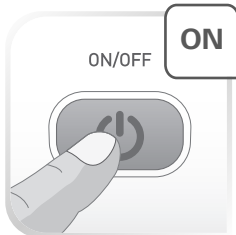
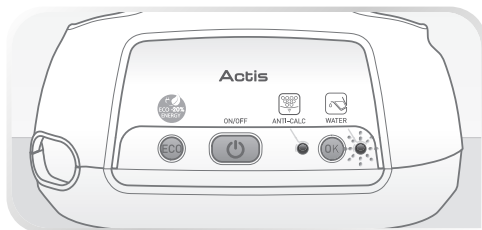
1.



2.



ON



2.



2.



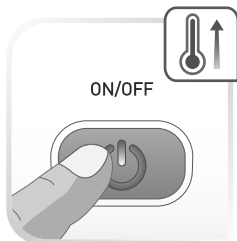
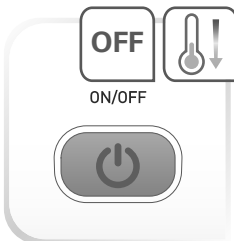
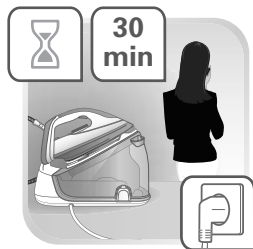
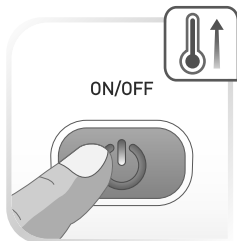
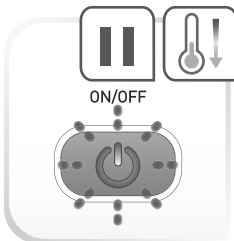
2.





2.

**AUTO
OFF**



2.



WATER

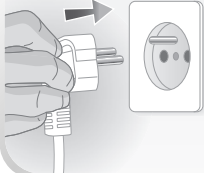
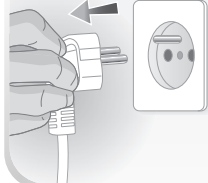


WATER

OK

ON/OFF

OFF

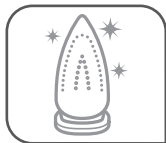


ON/OFF

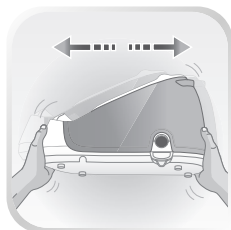
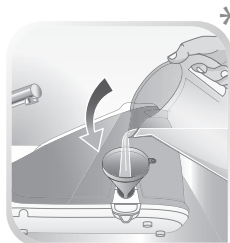
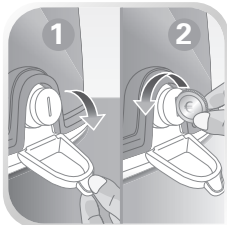
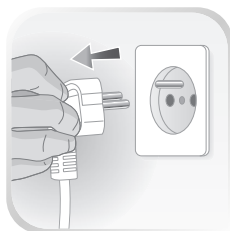
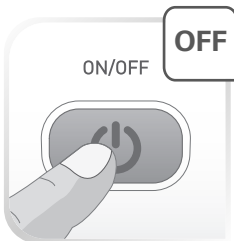
ON



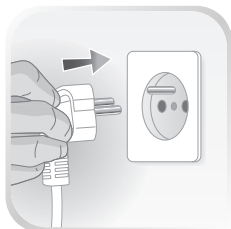
3.



3.



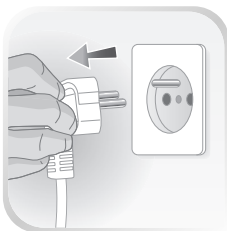
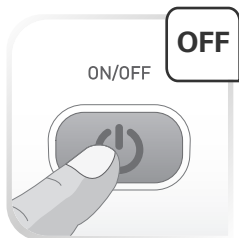
3.





3.


OFF



Important recommendations

Safety instructions

- Please read these instructions carefully before first use. This product has been designed for domestic and indoor use only. Any commercial use, inappropriate use or failure to comply with the instructions, the manufacturer accepts no responsibility and the guarantee will not apply.
- Never unplug the appliance by pulling the power cord. Always unplug your appliance:
 - before filling the water tank or rinsing the boiler,
 - before cleaning the appliance,
 - after each use.
- The appliance will not work without the limescale collector (depending on model).
- The appliance must be used and placed on a flat, stable, heat-resistant surface. When you place the iron on the iron rest, make sure that the surface on which you place it is stable.
- This appliance is not intended to be used by persons (including children) with reduced or impaired physical, sensory or mental capabilities or persons lacking appropriate knowledge or experience, unless a person responsible for their safety provides either supervision or appropriate instructions concerning use of the appliance prior to its use.
- Children should be supervised to ensure they do not play with the appliance.

- This appliance may be used by children aged 8 or over and persons lacking appropriate knowledge or experience or persons with reduced or impaired physical, sensory or mental capabilities provided that they have been thoroughly instructed regarding use of the appliance, are supervised, and understand the risks involved. Children shall not play with the appliance. Cleaning and user maintenance shall not be made by children without supervision. Keep the iron and its cord out of reach of children less than 8 years of age when it is energized or cooling down.
-  The surfaces which are marked with this sign and the soleplate are very hot during the use of the appliance. Do not touch these surfaces before the iron has completely cooled down.
- Never leave the appliance unattended when it is connected to the mains. Before storing the appliance, once it is unplugged, please wait until it has cooled down (around 1 hour).
- Do not use any descaling products (vinegar, industrial descaling products, etc.) to rinse the boiler: they may damage the appliance.
- Before rinsing the boiler/rinsing the anti-calc collector (depending on the model), wait until the appliance is completely cold and has been unplugged for at least 2 hours before unscrewing the boiler rinse cap/ the scale collector cover.
- Warning: if the boiler cap or the boiler rinse cap (depending on the model), is dropped or severely knocked, have it replaced by an Approved Service Centre, as it may be damaged.

- Never fill the boiler directly from the tap.
- The boiler cap must not be opened during use.
- The appliance must not be used if it has been dropped, if it has any visible damage, if it leaks, or if it functions abnormally in any way. Do not attempt to dismantle your appliance: have it examined at an Approved Service Centre to avoid any danger.
- Check the electrical power and steam cords for signs of wear or damage prior to use. If the electrical power cord or the steam cord is damaged, it must be replaced by an Approved Service Centre to avoid any danger.
- Accessories, consumables and end user replaceable parts must be only purchased from an Approved Service Centre.
- For your safety, this appliance conforms to all applicable regulations (Low Voltage Directive, Electromagnetic Compatibility, Environment, etc).
- Your steam generator iron is an electrical appliance: it must be used under normal conditions of use. It is designed for domestic use only.
- It is equipped with 2 safety systems:
 - a pressure release valve designed to avoid excessive pressure. In the event of malfunction, the valve releases excess steam.
 - a thermal fuse to avoid overheating.
- Always plug your steam generator iron:
 - into a mains circuit with voltage between 220 V and 240 V (Alternating current only),
 - a socket outlet with an earth connection.
 Connecting to the wrong voltage may cause irreparable damage to the appliance and will invalidate your guarantee.
- Do not use an extension lead. If you accept liability for doing so, only use an extension lead which is in good condition, has a plug with an earth connection and is suited to the power rating of the appliance.
- Completely unwind the power cord before plugging into an earthed socket outlet.
- The sole plate of your iron and the iron rest on the base unit can reach extremely high temperatures, and can cause burns: do not touch them. Never touch the electrical power cords with the sole plate of the iron.
- Always use a vented/mesh ironing board to prevent water spots on clothes and to avoid hot steam venting sideways.
- Your appliance emits steam, which can cause burns. Always handle the iron with care, especially when ironing vertically. Never direct the steam towards people or animals.
- Never immerse your steam generator iron in water or any other liquid. Never place it under a running tap.

**PLEASE RETAIN THIS INSTRUCTION
BOOKLET FOR FUTURE REFERENCE**

PLEASE REFER TO SAFETY INSTRUCTIONS AT THE BEGINNING OF THIS BOOKLET BEFORE USING YOUR APPLIANCE

Description

- | | |
|--------------------------------------------|----------------------------------------------------------------------|
| 1. Steam Boost button (depending on model) | 6. Anti calc rinsing |
| 2. Steam Output button | 7. Boiler (in the base unit) |
| 3. Iron lights Actis | 8. Easy Gliding Soleplate |
| 4. Steam cord | 9. Locking system (depending on model) |
| 5. Control panel | 10. Temperature control dial for iron soleplate (depending on model) |
| a. « ECO min » button with light | |
| b. « ON-OFF » button with light | |
| c. « Anti Calc » light | |
| d. « OK » button | |
| e. « Water tank empty » light | |

Connection at first use

- Remove the product from its packaging
- and recover the cord.
- Tilt the product base and plug the cord into the connector.

Locking system for retaining the iron on the base (depending on model)

Your steam generator is fitted with a retaining hoop to hold the iron onto the base with a locked position for easy transport and storage:

- Locking.
- Unlocking.

To transport your steam generator using the handle of the iron:

- Put the iron on the steam generator iron rest and raise the retaining hoop over the iron until it locks into place (audible click).
- Hold the iron by the handle to transport your steam generator.

Preparation

What water to use?

Your appliance has been designed to function with untreated tap water. If your water is very hard (check with your local water authority), it is possible to mix tap water with store-bought distilled or demineralised water in the following proportions : - 50 % tap water, - 50 % distilled or demineralised water.

Types of water not to use?

Heat concentrates the elements contained in water during evaporation. The types of water listed below contain organic waste or mineral elements that can cause spitting, brown staining, or premature wear of the appliance : water from clothes dryers, scented or softened water, water from refrigerators, batteries or air conditioners, pure distilled or demineralised water or rain water should not be used in your Tefal iron. Also do not to use boiled, filtered or bottled water.

• NB:

Never use rain water or water containing additives (such as starch, fragrances or water from household appliances). These additives may affect the properties of the steam, and together with high temperatures can cause deposits to form in the steam chamber which could soil your laundry.

Filling the water tank

- Place your steam generator on a stable, flat heat-resistant surface.
- We recommend that you use a mesh type ironing board to allow steam to pass through the garments for better ironing results and also to prevent steam venting sideways.
- Check that your appliance is unplugged and open the flap on the tank.
- Pour in untreated tap water up to the max mark.

Switch the steam generator on

The first time the appliance is used, there may be some fumes and smell but this is not harmful. They will not affect use and will disappear rapidly.

- Put the steam generator on a flat, stable, horizontal surface that is heatproof.
- Always ensure that the base unit is positioned close enough to the ironing surface to avoid straining and wear of the steam cord.
- Completely unwind the power cord.
- Plug your steam generator into an earthed socket.
- Press the «ON-OFF» button.
- The «ON-OFF» button light remains flashing while the appliance is warming up. When the light stops flashing (after approximately 2 minutes) the steam generator is ready.

Operating the control panel

- The blue light of the «ON-OFF» button is flashing : the boiler is heating up. When the light stops flashing, the steam generator is ready.
- The red «Water tank empty» button light is flashing : the water tank is empty. See paragraph «Refilling the water tank during use».
- The orange «Anti-calc» light is flashing : maintenance is required, see paragraph «Maintenance and cleaning».
- Your steam generator comes with an automatic shut-off system after approximately 8 minutes without use. The «ON-OFF» button light is flashing: the steam generator is on standby. Press the «ON-OFF» button or the steam shot button to start ironing again. See paragraph «AUTO-OFF» System.

Use

Steam ironing

Recommendations: To prime the steam circuit, either before using the iron for the first time, or if you have not used the steam function for a few minutes, press the steam control button several times in a row, holding the iron away from your clothes. This will enable any cold water to be removed from the steam circuit.

- To obtain steam, press the steam output button under the iron handle. The steam will stop when you release the button.
- After approximately one minute, and regularly while it is being used, your steam generator's electric pump injects water into the boiler. It makes a noise but this is quite normal.
- If you are using starch, always spray it onto the reverse side of the fabric to be ironed.

Do not iron over zips, studs or other hard or sharp objects which may damage the soleplate. Do not place the iron on a metal support. When taking a break from ironing, always place the iron on the iron rest plate of the unit. It is equipped with non-slip pads and has been designed to withstand high temperatures.

Dry ironing

- Do not press the steam control button under the iron handle.

Vertical steam ironing

Recommendations: for fabrics other than linen or cotton, hold the iron a few centimetres from the garment to avoid burning the fabric.

- Hang the garment on a coat hanger and hold the fabric slightly taut with one hand.
- As steam is very hot: never attempt to remove creases from a garment while it is being worn, always hang garments on a coat hanger.
- Holding the iron in a vertical position tilted slightly forwards, press repeatedly on the steam control button (underneath the iron handle) moving the iron from top to bottom.

Steam boost function (depending on model)

- Your appliance is fitted with a steam boost function: automatic sequential steam for effortless use.
- To use this function, press the steam boost button on the top of the iron.

ECO min mode






The ECOmin function reduces energy consumption. Press the ECO button to change to ECO mode and press the same button again to exit this mode. The ECO /Min function allows ironing at the lowest temperature and low steam flow suitable for ironing the most delicate fabrics.

Regulation Actis

- Your steam generator is fitted with an iron temperature control dial.
- Place the iron's temperature control dial according to the type of fabric to be ironed (see table below).

SETTING THE TEMPERATURE AND STEAM OUTPUT ACCORDING TO TYPE OF FABRIC TO BE IRONED:

TYPE OF FABRICS	Setting temperature control	
Synthetics, Silk (polyester, acetate, acrylic, polyamide)	●	
Wool**, Viscose	● ●	
Linen, cotton	● ● ●	

**If you are ironing woollen garments, press repeatedly on the steam shot button without placing the iron on the garment. This will avoid it becoming shiny.

Warning, fabrics with the symbol  are not suitable for ironing.

Actis Iron temperature setting:

- Start with the fabrics to be ironed at a low temperature (●) and finish with those which need higher temperatures (●●● or Max).

- Mixed fibre fabric: set the ironing temperature to the setting for the most delicate fabric.

• If you put the temperature control dial in the "min" position, the iron does not become hot.

Important: whenever you start using your iron and whenever you reduce the temperature during use, the iron is fully ready for use when its iron light goes out. During use, when you increase the temperature of the iron, you can start ironing immediately.

• While ironing, the iron light turns on and off, as the temperature adjusts without interrupting ironing.

• If you are in doubt about the type of fabric an item of clothing is made from, check the label.

**If you are ironing woollen garments, press repeatedly on the steam shot button without placing the iron on the garment. This will avoid it becoming shiny.

«AUTO-OFF» System

• For your safety, the steam generator is fitted with an «AUTO-OFF» monitoring system, which is activated automatically after approximately 8 minutes without use.

• Only the «ON-OFF» button flashes to indicate that the appliance is on standby.

• To reactivate the steam generator:

- Press the «ON-OFF» button.

- Wait for the «ON-OFF» button light to stop flashing before starting your ironing again.

• For your safety, after approximately 30 minutes of non-use, the «AUTO-OFF» system switches off your steam generator. To start your ironing again, press the «ON-OFF» button.

Refilling the tank during use

• When the red «water tank empty» light is flashing, there is no more steam. The water tank is empty.

• Switch off and unplug the product.

• Using a jug of water, fill to a maximum of 1.2 litre with untreated tap water and fill the tank, making sure not to exceed the «Max» level of the tank.

• Plug the appliance and turn it on.

• Press the «OK» restart button under the control panel to continue ironing. When the «ON-OFF» button light remains on, the steam is ready.

Maintenance and cleaning

Cleaning your steam generator

Before cleaning, ensure your steam generator is unplugged and that the soleplate and the iron have cooled down.

• Do not use detergent or descaling products for cleaning the soleplate base-unit.

• Never hold the iron or the base unit under the tap.

• Regularly clean the soleplate with a damp, nonmetallic washing up pad.

• Clean the plastic parts of the appliance occasionally with a soft cloth.

Rinsing the boiler, once a month

Before cleaning, ensure your steam generator is unplugged and that the soleplate and the iron have cooled down.

- To extend the efficient operating life of your boiler and avoid scale particles on your linen, your generator is equipped with an orange anticalc light that flashes on the control panel after about 10 uses.
If the orange anticalc light flashes, you can continue ironing normally but remember to rinse the boiler first the next time that you use it.
- **Before proceeding, check that the generator is cool and unplugged for more than 2 hours.**
- Place the steam generator on the edge of your sink, with the iron placed to one side, standing on its heel.
- Gently unscrew the boiler rinse cap with a coin.
- Holding the steam generator in a tilted position, using a jug and a funnel*, fill the boiler with ¼ litre of untreated tap water.
- Shake the base unit for a few moments and then empty it completely into your sink.
- To obtain the best results, we recommend that this operation is done twice.
- Screw back and tighten up the boiler rinse cap.
- **The next time you use the generator hold down the "OK" button for a few seconds to turn off the orange light.**

Storing the steam generator

- Place the iron on the steam generator iron rest.
- Switch your steam generator off by pressing the «ON-OFF» button and unplug the appliance.
- Raise the retaining hoop over the iron until the protection system locks into place (audible click) – depending on model.
- Leave the steam generator to cool before putting it away if you are storing it in a cupboard or a confined space.
- You can store your steam generator safely by carrying it by the iron handle – depending on model.

Environment protection first !



① Your appliance contains valuable materials which can be recovered or recycled.



➡ Leave it at a local civic waste disposal centre.

Problems with your steam generator?

PROBLEMS	CAUSES	SOLUTIONS
The steam generator does not switch on or the iron indicator light and the «ON-OFF» light are not lit up.	The appliance is not switched on.	Check that the appliance is plugged in correctly to a working power socket and that it is switched on. Press the «ON-OFF» button.
	The «AUTO-OFF» system has activated after 30 minutes of non-use and has switched off your steam generator.	Press the «ON-OFF» restart button located under the control panel.
Water runs out of the holes in the soleplate.	The soleplate is not hot enough.	Wait for the thermostat light to stop flashing before activating the steam control.
	The water has condensed in the pipes because you are using steam for the first time or you have not used it for a few minutes.	Press the steam button while holding your iron away from the ironing board until the steam starts to come out.
Water streaks appear on the linen.	Your ironing board cover is soaked with water as it is not suited to the power of a steam generator.	Ensure that you have a suitable (vented mesh) ironing board).
White streaks come through the holes in the soleplate.	Scale is coming out of the boiler because it is not being rinsed regularly.	Rinse the boiler (see § descaling your steam generator).
Brown streaks come through the holes in the soleplate and stain the linen.	You are using chemical descaling agents or additives in the water for ironing.	Never add any products to the water tank (see § What water can I use?).
	Your linen is not rinsed sufficiently or you have ironed a new garment before washing it.	Ensure linen is rinsed thoroughly to remove any soap deposits or chemicals on new garments which may be sucked up by the iron.
The soleplate is dirty or brown and may stain the linen.	You are using starch.	Always spray starch on the reverse side of the fabric to be ironed.
There is no steam or there is little steam.	The water tank is empty (red warning light flashing).	Fill the water tank and press the «OK» until the light goes out.
The red «tank empty» button is flashing even though the tank has been filled.	You have not pressed the «OK» restart button.	Press the «OK» restart button on the control panel.
Steam comes out around the boiler rinse cap.	The boiler rinse cap is not tightened correctly.	Tighten the boiler rinse cap but do not overtighten it.
	The boiler rinse cap seal is damaged.	Contact an Approved Service Centre.
Steam or water is coming out from under the appliance.	The appliance is faulty.	Stop using the steam generator and contact an Approved Service Centre.
The «Anti-scale» button is flashing even though the collector has been rinsed.	You have not pressed the «OK» restart button.	Press the «OK» restart button located under the control panel.
The soleplate is scratched or damaged.	You have put your iron down on a metal iron rest or you have ironed over a zip or metal fastener.	Always stand the iron upright or on the iron rest. Do not iron over a zip or metal fastener.
	You have cleaned your soleplate with an abrasive or metal pad.	See chapter «Cleaning the soleplate».

If you have any problems or queries please call our Customer Relations team first for expert help and advice:
0345 602 1454 - UK (01) 677 4003 - Ireland or consult our website - www.tefal.co.uk