

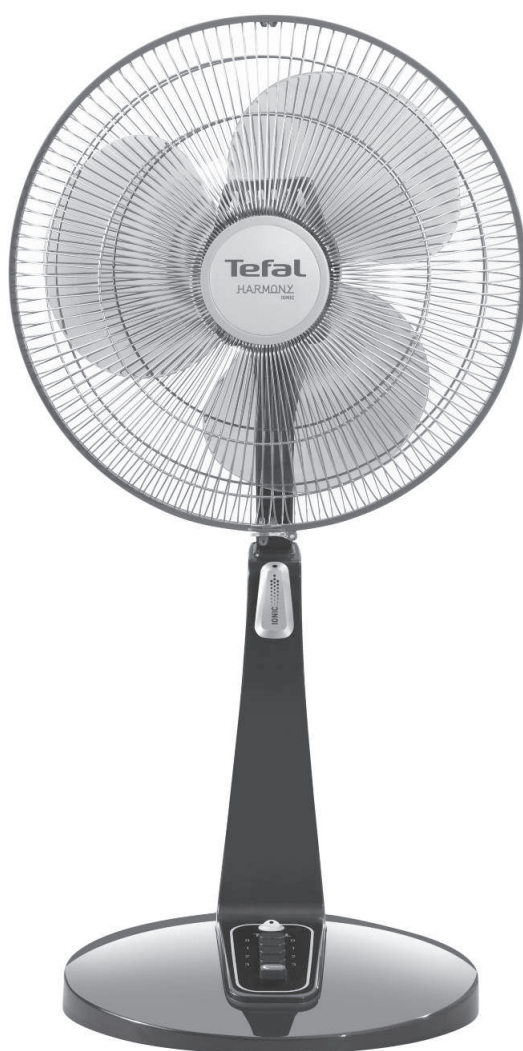
Tefal®

EN

TH

VI

MS

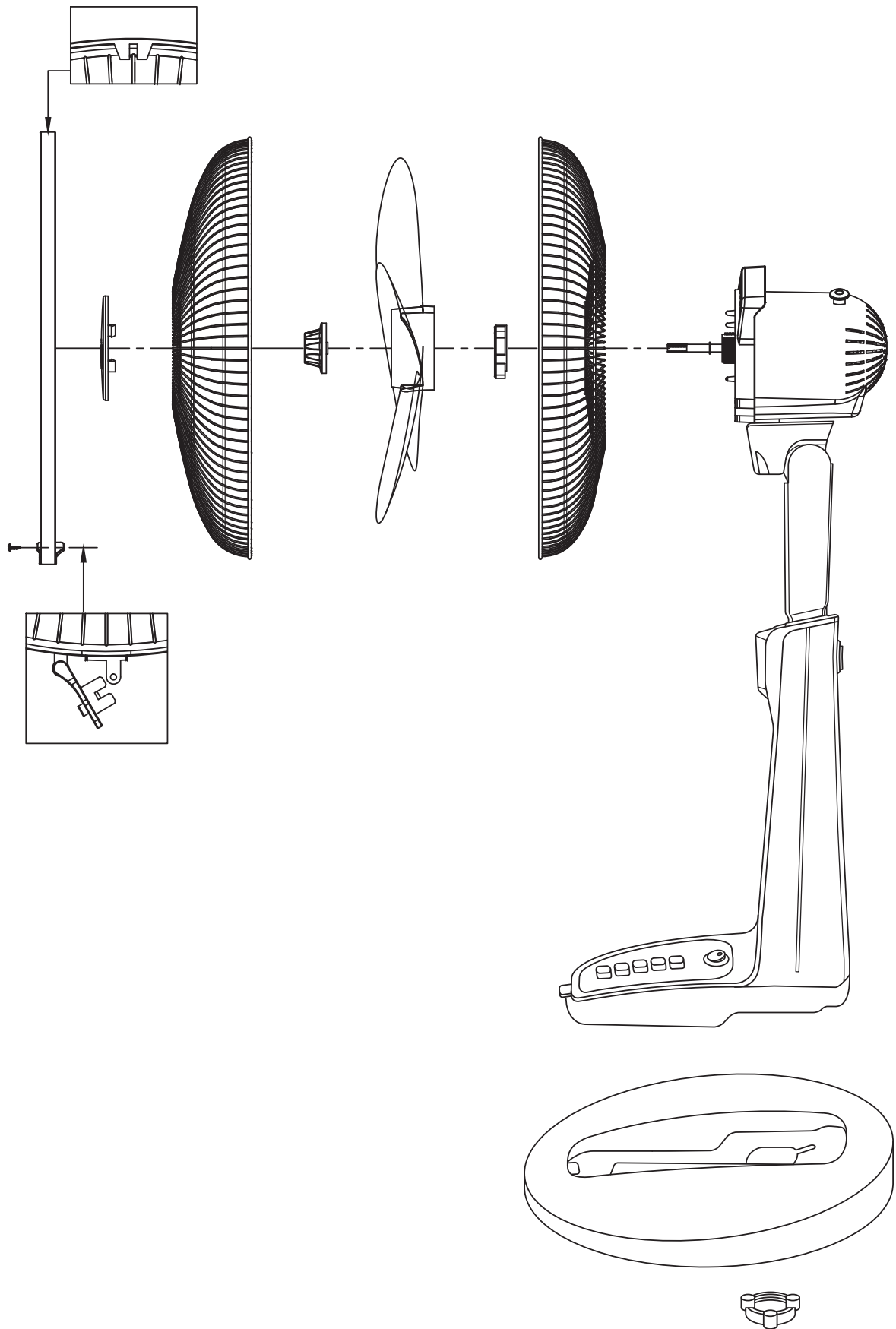


SLIDE FAN

TH • พัดลมสไลด์ VI • Quạt Lững MS • Kipas Gelongsor
VF362X

www.tefal.com

4100000085/02



1 - WARNINGS

It is essential that you read these instructions carefully and comply with the following recommendations.

- This appliance is not intended for use by persons (including children) with reduced physical, sensory or mental capabilities, or lack of experience and knowledge, unless they have been given supervision or instruction concerning use of the appliance by a person responsible for their safety. Children should be supervised to ensure that they do not play with the appliance.

- For your safety, this appliance complies with the applicable standards and regulations (Low Voltage Directive, Electromagnetic Compatibility, Environmental...).
- Before using, always check the condition of the appliance, the power socket and the power lead.
- Do not pull on the power cable or the appliance, even to unplug it from the wall socket.
- Never insert objects into the appliance (e.g. needles...).
- Do not use your appliance in a dusty room or a room where there is a risk of fire.
- This appliance is intended for domestic use only. It must therefore not be used in industrial applications.
- The warranty will be void in the event of damage arising from improper use.
- If the power cable is damaged, it must be replaced by the manufacturer, its after-sales service or a person with similar qualifications to avoid any danger.

EN

2 - VERY IMPORTANT

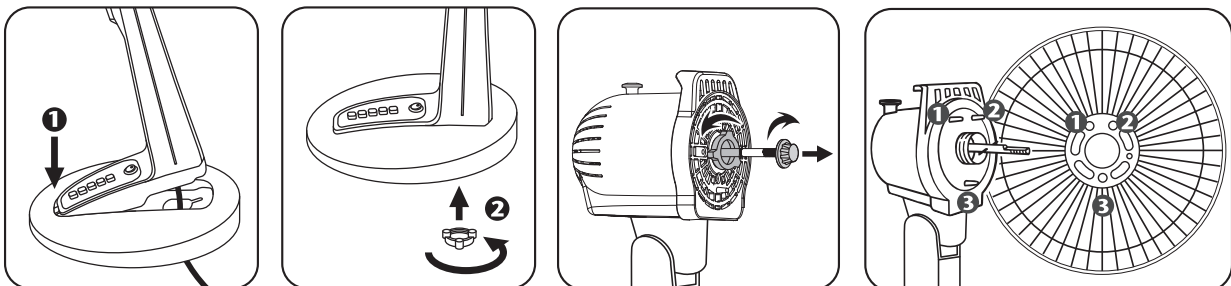
- Keep the appliance 50 cm away from any objects (curtains, walls, aerosols, etc.)
- NEVER ALLOW WATER TO PENETRATE THE APPLIANCE.
- Do not touch the appliance with wet hands.
- Before operating, please ensure that :
 - The appliance is assembled according to the manufacturers instructions.
 - The appliance is placed on a stable and firm surface
 - The appliance is in a normal operating position (in an upright position on its feet).
- This appliance must not be used in a damp room.
- Unplug the fan during assembling and cleaning.

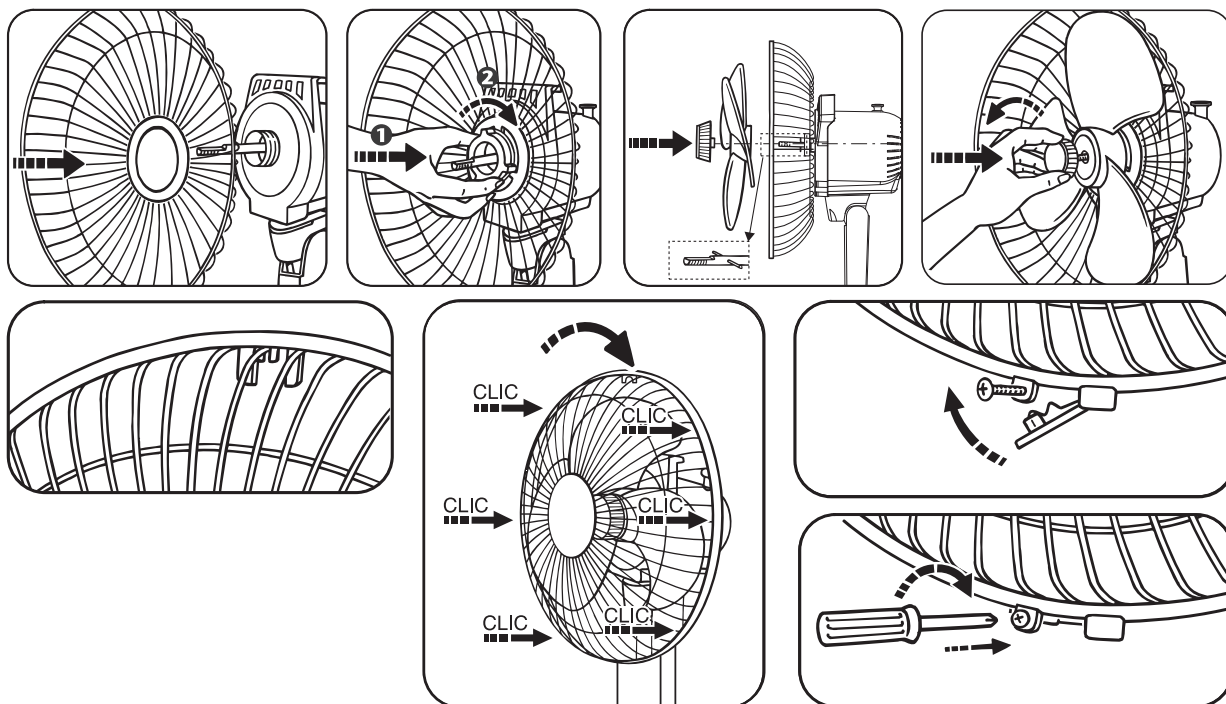
3 -VOLTAGE

- Before using for the first time, check that the voltage of your mains supply is the same as that shown on the appliance and that your mains supply is suitable for the power indicated on the appliance.
- Your appliance can be used with a power plug without an earth connection. It is a class II appliance (dual electrical insulation).

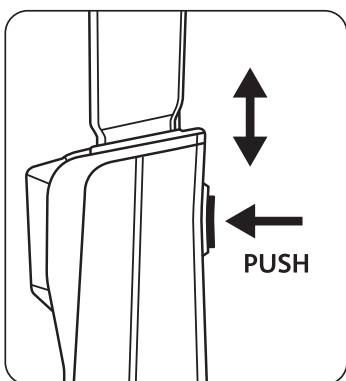
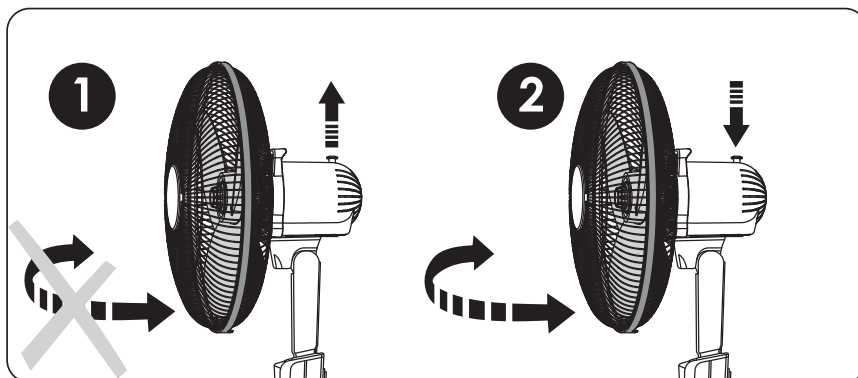
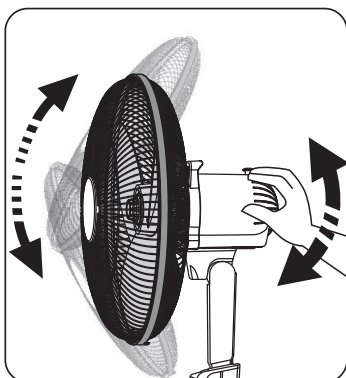
4 - ASSEMBLING

- Your appliance is supplied unassembled. For your safety, it is essential to assemble it correctly.
- You must set and use your appliance in compliance with the standards in force in your country.

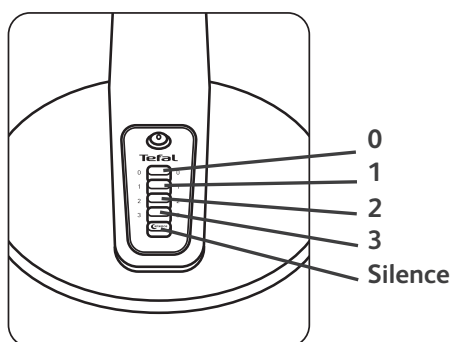
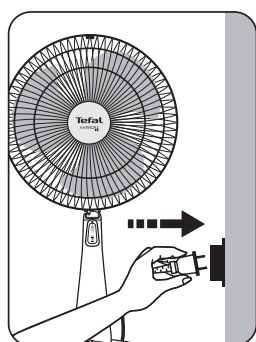




5 - OPERATION



To adjust the height of the fan, push the button and the fan will go up.
To decrease the height, push down on the fan by hands.

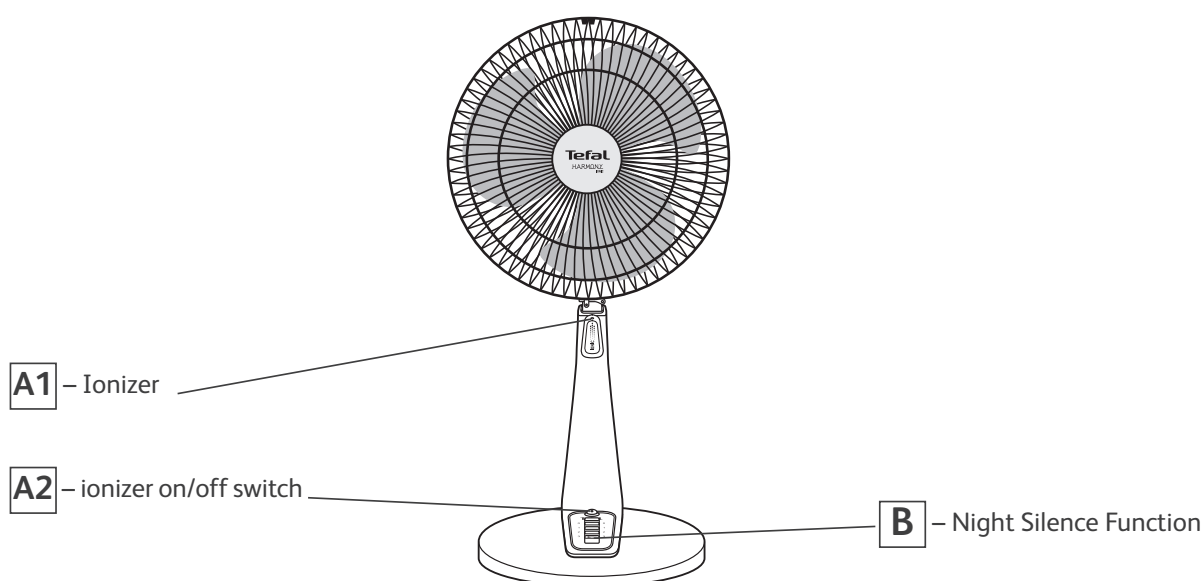


Operate the fan and choose the speed you require using the button:

- 0 : Stop
- 1 : Low speed
- 2 : Medium speed
- 3 : High speed
- Silence : Silent night function

EN

This fan is equipped with an **IONIC SYSTEM (A1 + A2)** and a **SILENT NIGHT FUNCTION (B)**



"IONIC" SYSTEM

The negative ions that are effectively released by your appliance rebalance the air in the room so as to create the feeling of well-being that one feels in the mountains, near a waterfall or at the seaside where negative ions are naturally found in very large numbers.

Your appliance spreads up to 3 million negative ions / cm³ into the air.

See Operation below.

- Press the **A2** button to activate the ionizer: the red indicator turns on
- Press the **A2** button back to stop the ionizer: the red indicator turns off

PLEASE NOTE : The ionic function must be used only when a speed is switched on.

SILENT NIGHT FUNCTION

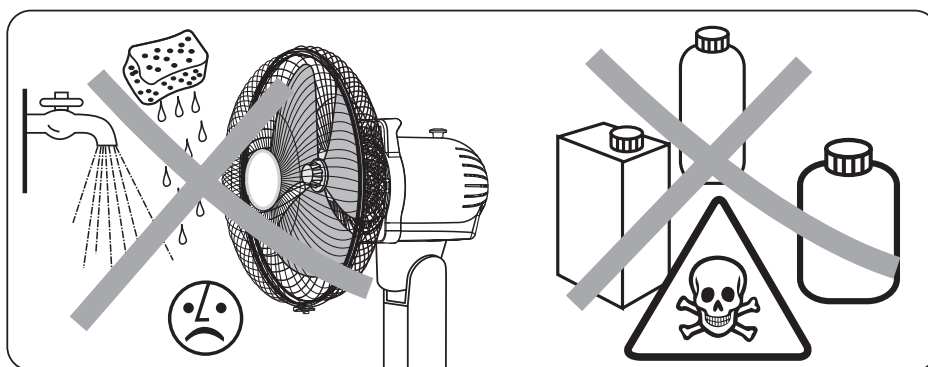
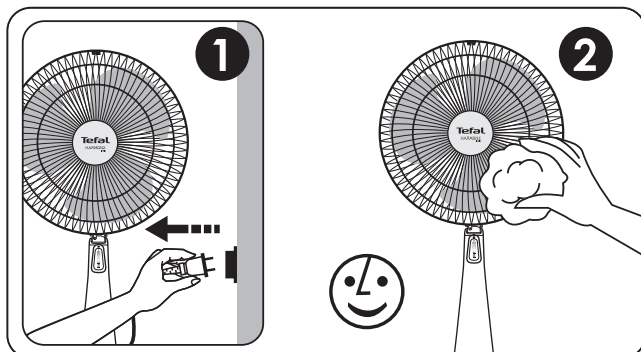
The **SILENT NIGHT FUNCTION (B)** is a speed which has been specially developed to provide smooth and quiet airflow during the night.

IMPORTANT:

We advise you to unplug your appliance when it is not in use.

6 - CLEANING

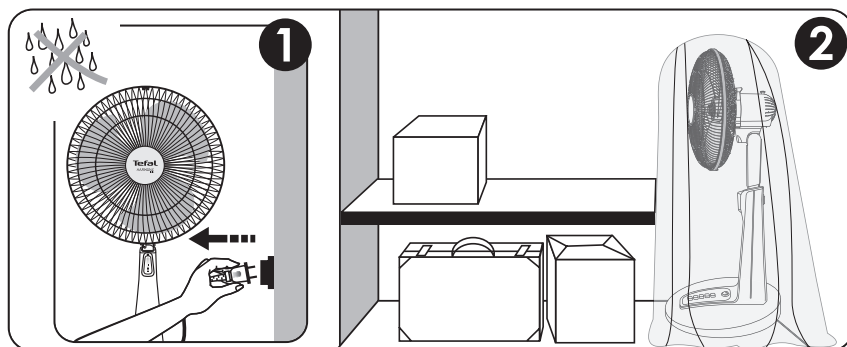
- Your appliance must be unplugged before proceeding with any cleaning work.
- You can clean it with a slightly damp cloth.



- **IMPORTANT:** Never use abrasive products which might damage the appearance of your appliance.

7 - STORAGE

- When you are not using your appliance, store it in a dry place.



8 - IN THE EVENT OF PROBLEMS

- Never dismantle your appliance yourself. A poorly repaired appliance may be dangerous for the user.
- If the appliance ceases to operate or is damaged in any way, contact one of our authorised service centres.

9 - ENVIRONMENT PROTECTION FIRST !



Your appliance contains valuable materials which can be recovered or recycled.
Leave it at a local civic waste collection point.