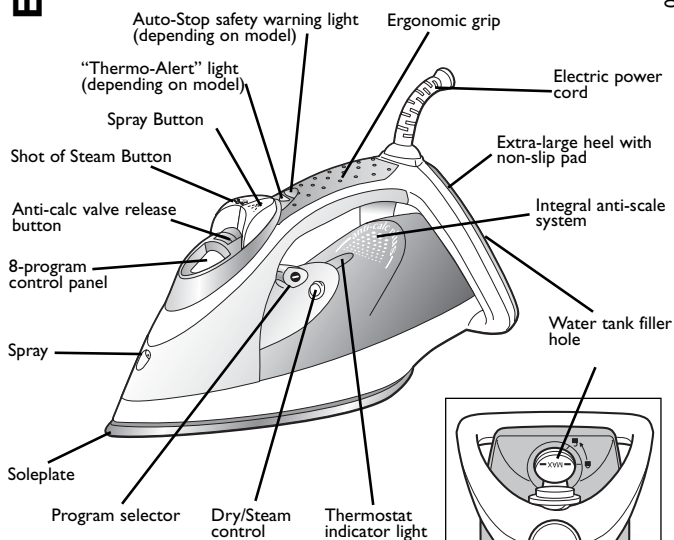


Please read these instructions carefully and keep them for future reference.

English

## Program 8

028034 - 12/05



**Warning ! Remove any labels from the soleplate before heating up the iron (depending on model).**

### Warning!

*Before using your iron with the steam function for the first time, we recommend that you operate it in a horizontal position for a few moments, away from your linen, i.e. press the Shot of Steam button a few times.*

*During the first few uses, a harmless odour and smoke may be given off. This has no effect on the use of the iron and will disappear quickly.*



### What water to use ?

Your appliance has been designed to function with untreated tap water. However, it is necessary to operate the Self-Clean function regularly in order to eliminate hard water deposits from the steam chamber.

If your water is very hard (check with your local water authority), it is possible to mix tap water with store-bought distilled or demineralised water in the following proportions : - 50% tap water, - 50% distilled or demineralised water.



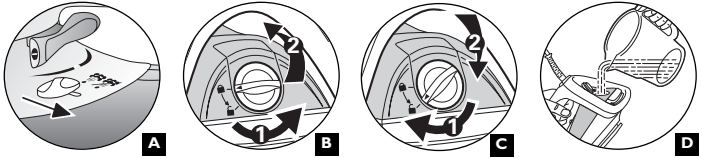
### Types of water not to use

Heat concentrates the elements contained in water during evaporation. The types of water listed below contain organic waste or mineral elements that can cause spitting, brown staining, or premature wear of the appliance : water from clothes dryers, scented or softened water, water from refrigerators, batteries or air conditioners, pure distilled or demineralised water or rain water should not be used in your Tefal iron. Also do not use boiled, filtered or bottled water.

# I- STEAM IRONING



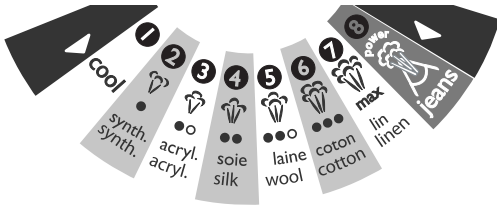
## Filling the water tank



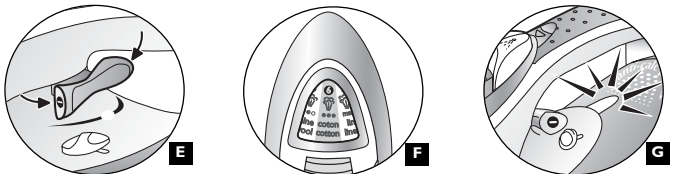
- Unplug your iron before filling it.
- Set the steam control to DRY (A)
- Take the iron in one hand and tilt it slightly, soleplate downwards (D).
- To open the water tank stopper, turn it anticlockwise until the arrow on the stopper points to the "open padlock" symbol (B). It will lift automatically.
- Fill the tank up to the "MAX" line (D).
- Re-close the tank stopper (C). To close the stopper, align the arrow with the "open padlock" symbol then turn it clockwise until the arrow is aligned with the "closed padlock" symbol.
- You can now plug in your iron.

## Choose your ironing programme

Your iron has 8 ironing programmes:



- For each program corresponding to a type of textile to be ironed, your iron automatically and precisely determines the most suitable temperature and steam flow to guarantee best results.

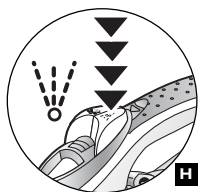


- To select the appropriate ironing program, use the program selector beneath the grip (E).
- Pressing on the left side : selects the programs requiring low temperature and steam levels. Beyond program 1, pressing the program selector has no effect.
- Pressing on the right side : selects the programs requiring high temperature and steam levels. Beyond program 8, pressing the program selector has no effect.
- The program selected appears automatically on the indicator panel at the front of the iron (F).
- Set the steam control to steam ( )
- When your iron reaches the required temperature, the thermostat indicator goes out (G). You can start ironing.

### Recommendations:

#### Fabrics and ironing temperatures:

- Your iron heats up quickly: so begin by ironing fabrics that are ironed at low temperatures first, then go on to those requiring a higher temperature,
- if you change to a program requiring lower temperatures, wait for the thermostat light to come on again before continuing to iron (for models fitted with the "Thermo-Alert", refer to the section "Thermo-Alert function").
- when ironing fabrics with mixed fibres, set the ironing temperature for the most delicate fibre.  
For delicate fabrics we recommend testing the fabric first on an inconspicuous place eg (inside them).
- For best results we recommend you use a vented ironing board to allow the powerful steam to penetrate through the fabric more efficiently.
- Ensure that the fabric you are ironing is flat to avoid steam venting sideways whilst ironing.



### Spray Function

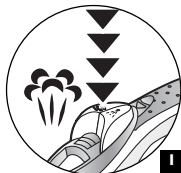


- While ironing, press a few times in succession on the Spray button to dampen the fabric (H) and iron out obstinate creases.

### For more steam (shot of steam button)

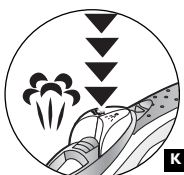


- Press the Shot of Steam button from time to time (I)
- Wait a few seconds between each shot before pressing the button again.



### Vertical steam ironing

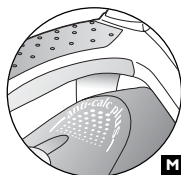
- Ideal for removing creases from suits, jackets, skirts, hanging curtains etc
- Hang the garment on a hanger and hold the fabric slightly taut with one hand. The steam is very hot, so you should always do this with the garment on a hanger – never while someone is wearing it.
- Set the iron to program 8 (J).
- Hold the iron a few centimetres from the fabric to avoid burning delicate fabrics.
- Press the Shot of Steam button (I) repeatedly (K), moving the iron from top to bottom. (See illustration) (L).



### Integral anti-scale system

You iron is equipped with an integral anti-scale system (M).

- This system will help to provide :
  - a better ironing quality with a constant flow of steam,
  - a longer life for your iron.



### Anti-drip function

- The principle of automatic selection of the steam according to the fabric selected, reduces the steam flow at lower temperatures and avoids water dripping from your iron onto the fabric.

### Auto-Stop safety feature (depending on model)



- The electronic system cuts off the electric power and the **Auto-Stop warning light flashes if the iron is left vertically on its heel for more than 8 minutes, or in a horizontal position for more than 30 seconds, for your security.**
- To restart the iron, just move it gently until the warning light stops flashing.

**Note :** when the Auto-Stop warning light is on, it is normal for the thermostat light to remain off.

### "Thermo-Alert" function (depending on model)

- The "Thermo-Alert" light (O) comes on when you choose a program requiring a lower temperature (for example, changing from program 8 to program 6). It remains lit while the soleplate temperature is too high.
- When it goes out, you can iron without risk of burning the fabric.



## 2- DRY IRONING



- Choose your ironing program.
- Set the steam control to DRY (see diagram A).
- You may start ironing when the thermostat light goes out.

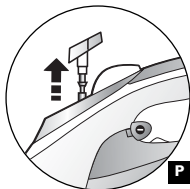
## 3- CARING FOR YOUR IRON

**BE CAREFUL ! Unplug your iron and let it cool down before cleaning it.**

### • CLEANING THE ANTI-CALC VALVE

**(Once per month) :**

- Unplug your iron and empty the water tank.
- To remove the anti-calc valve, select program 8, press the release button (P) and pull the valve upwards.



**NEVER TOUCH THE END OF THE VALVE.**



- Soak the valve in a cup of white spirit vinegar or plain lemon juice for 4 hours (Q).
- Rinse the valve under running water.
- Replace the anti-calc valve.

**THE IRON WILL NOT FUNCTION WITHOUT THE ANTI-CALC VALVE.**

### • SELF-CLEANING :

**In order to extend the life of your iron, use the Self-Cleaning function once a month.**

- Allow your iron to heat up with the tank full and standing on its heel (on program 8).
- When the thermostat light goes out, unplug the iron and hold it in a horizontal position, over a sink.
- Remove the anti-calc valve.
- Shake the iron gently, over the sink, until some of the water in the water tank (with the impurities) has flowed out through the soleplate.
- At the end of the operation, push the anti-calc valve back into position.
- Turn the iron back on for 2 minutes, setting it on its heel, to dry the soleplate.
- Unplug the iron, and when the soleplate is just warm, wipe it with a soft cloth.

**Recommendations :**

**the self-cleaning function helps to slow down the scaling up of your iron.**

### • CLEANING THE SOLEPLATE :

- While the soleplate is still just warm, clean it by rubbing it with a moist non-metallic pad.

## 4- STORING YOUR IRON

- Unplug the iron and wait for the soleplate to cool down.
- Empty the water tank and set the steam control to DRY. A little water may remain in the tank.
- Wind the cord not too tightly around the heel at the back of the iron.
- Store the iron on its heel.

## FOR YOUR SAFETY

- If it is dropped or it falls to the floor, the iron must not be used if there is any visible sign of damage or if it leaks.
- Your iron must be placed on a flat, stable, heat-resistant surface.
- **Warning !** The voltage of your electrical installation must correspond to that of the iron (220V-240V). Connecting to the wrong voltage may cause irreversible damage to the iron and will invalidate the guarantee.
- This iron must always be plugged into an earthed socket.
- If using a mains extension lead, ensure that it is correctly rated (10A), with an earth.
- If the electrical cord becomes damaged, it must be immediately replaced by an Approved Service Centre to avoid any danger.
- Never immerse your iron in water !
- The appliance must be unplugged before filling or emptying the water tank.
- If the appliance falls, have it checked by a suitably qualified person before using it again; unseen damage may be dangerous.
- The soleplate may be very hot :
  - Never touch it.
  - Always let it cool off before putting it away.
  - Never leave your iron unattended when it is plugged in or while the soleplate is still hot.
  - Always keep your iron out of the reach of children.
  - Be careful of hot steam especially when ironing close to the edge of the ironing board.
- When placing the iron on its stand, ensure that the surface on which the stand is placed is stable.

**NEVER DISMANTLE YOUR IRON ;  
ALWAYS CONTACT AN APPROVED SERVICE CENTRE.**

- This product has been designed for domestic use only. Any professional use, inappropriate use or failure to comply with the instructions, the manufacturer accepts no responsibility and the guarantee will not apply.

## ENVIRONNEMENT PROTECTION FIRST !

- ❶ Your appliance contains valuable materials which can be recovered or recycled.
- ➔ Leave it at a collection point.





## 5- IF THERE IS A PROBLEM

### Problem

- Water drips from the holes in the soleplate.

### Possible causes

- The chosen temperature is too low and does not allow for the formation of steam.
- You are using the Shot of Steam button too often.
- You have stored the iron horizontally, without emptying it and without setting it to DRY.

### Solutions

- Choose a program from 2 to 8 and wait for the light to go out.
- Wait a few seconds between each use of the button.
- See the section "Storing your iron".

- Brown streaks come through the holes in the soleplate and stain the linen.

- You are using chemical descaling agents.
- You are using pure distilled/demineralised or softened water.
- Fabric fibres have accumulated in the holes of the soleplate and are burning.
- Your linen has not been rinsed sufficiently or you have ironed a new garment before washing it.

- Do not add any descaling agents to the water in the water tank.
- See section "Types of water: not to use".
- Carry out a self-clean.
- Clean the soleplate with a non-metallic sponge.
- Vacuum the holes of the soleplate from time to time.
- Ensure linen is rinsed thoroughly to remove any soap deposits or chemicals on new garments which may be sucked up by the iron.

- The soleplate is dirty or brown and can stain the linen.

- You are ironing with an inappropriate program (temperature too high).
- You are using starch.

- Select the appropriate program.
- Clean the soleplate as indicated above.
- Always spray starch onto the reverse side of the fabric to be ironed.

- There is little or no steam.

- The water tank is empty.
- The anti-calc valve is dirty.
- Your iron has a build-up of scale.
- Your iron has been used dry for too long.

- Fill it.
- Clean the anti-calc valve.
- Clean the anti-calc valve and carry out a self-clean.
- Carry out a self-clean.
- Wait for the soleplate to reach the correct temperature

- The soleplate is scratched or damaged.

- You have placed your iron flat on a metallic rest-plate or ironed over a zip.


- Always set your iron on its heel.

- Water is running out of the tank filler hole.

- You have not closed the tank stopper properly.

- Make sure that the stopper is properly closed and that the arrow points to the "closed padlock" symbol.

- Steam or water come from the iron as you finish filling the tank.

- The steam control is not set to the DRY position .
- Check that the steam control is set to the DRY position.

- The program selector has no effect.

- The selection is already at one extreme of the range.

- Operate the selector in the opposite direction.

- The spray does not spray

- The tank is empty.

- Fill the tank.

If you have any problem or queries, please contact our Customer Relations team first for expert help and advice.